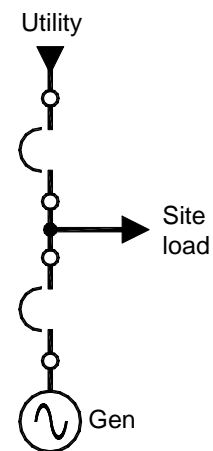


Featured Product:

## Power Module Switchgear



- Low or medium voltage
- Fully automatic operation in parallel with utility or other generators.
- Minimized overall dimensions for Power Module space and air flow requirements.
- Integrated engine battery charger
- Internal AC distribution for jacket water heaters, space heaters, fuel transfer pumps, etc.
- Remote control ready
- Utility RTU compatible
- “Next generation” integrated microprocessor based control provides broader range of features and reduced cost:
  - Automatic paralleling
  - Automatic voltage matching
  - Full complement of protective relaying and power metering functions
  - Soft loading kW and kVAR control
  - LCD display and keypad user interface

Switchgear Specifications

Voltage:	208 – 600V, 3 phase, 3 or 4 wire (low voltage) 2400 – 15kV, 3 phase, 3 wire (medium voltage)
Current:	Up to 4000A (low voltage) Up to 3000A (medium voltage)
Enclosure:	NEMA 1 for indoor use
Dimensions:	Std. low voltage – 28" or 56"W x 80"H x 31" or 46"D
Metering accuracy:	0.3% - voltage and current 0.6% - power and energy
Metering options:	3 varieties of APT true RMS, 3 element digital Power Sensors available: PS-V – voltage and frequency sensing PS-P – power sensing (A, kW, PF, kVAR, etc.) PS-E – energy sensing (kWh, kVARh, kVAh)  Optional analog metering
Generator protection:	Overcurrent (50/51), undervoltage (3 phase), overvoltage (3 phase), underfrequency, overfrequency, reverse power, reverse kVAR's, ground fault, loss of utility, utility overvoltage (3 phase), utility undervoltage (3 phase), utility over/under frequency
Options:	SCADA-ready Modbus RTU communications port